
PROGRAM GUIDE: THE CANCER SCREENING RESEARCH AND INNOVATION OPPORTUNITY (CSRIO)

Supported by The Alberta Cancer Prevention Legacy Fund (ACPLF)

The CSRIO Program has been designed to identify, develop, and implement solutions to improve cancer screening in underserved populations.

PROGRAM OVERVIEW

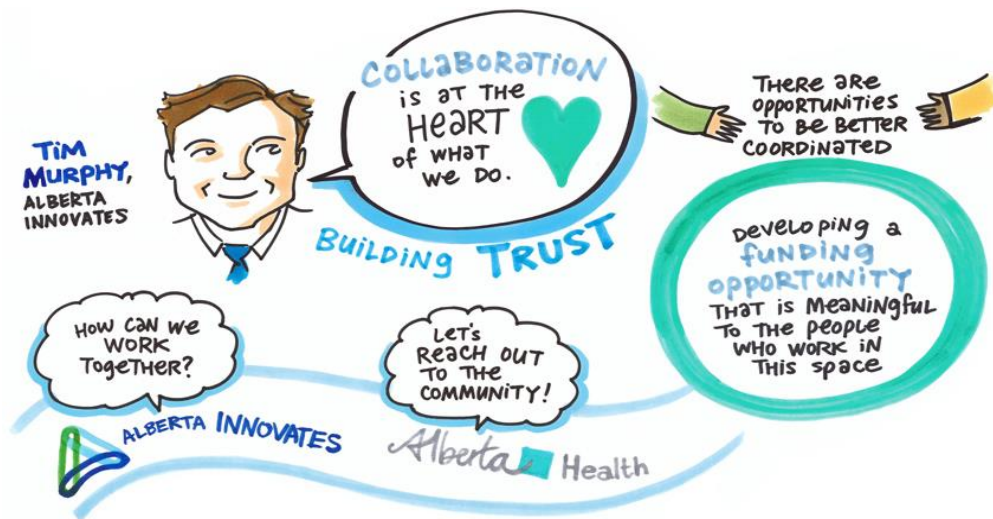
Background

At a population level, effective and efficient cancer screening can reduce the detrimental impact of the disease on health outcomes while simultaneously alleviating pressure on an already overburdened health system. Much effort has been placed into the development of guidelines and public awareness campaigns to promote screening for the most common types of cancer (e.g. breast, colon, prostate and cervical cancers).¹ However, screening rates vary across population groups, as do risk factors, cancer relevance, health outcomes, and the burden of the disease.

In response to the high impact that effective and efficient screening can have on health outcomes and health system sustainability, Alberta Innovates has partnered with Alberta Health (AH) to deliver the Cancer Screening Research and Innovation Opportunity (CSRIO), with a specific emphasis on improving cancer screening processes and rates, particularly for underserved populations.

While there is some evidence on factors that contribute to disparities in cancer screening rates (e.g., social and economic disadvantages, geographic location, and discrimination), many gaps remain. Additionally, the multifaceted nature of cancer screening and early detection (e.g., physical examinations combined with clinical procedures and molecular-testing) may itself involve multiple burdens and obstacles to participation that could be reduced.

¹ Clinical Practice Guidelines. (n.d.). Retrieved August 29, 2018, from <http://www.topalbertadoctors.org/cpgs/>



Program Details

CSRIO will take a bold three-pronged approach to supporting the identification and application of solutions that enhance population-based cancer screening, with a strong focus on underserved populations supported by robust data. Specifically, the CSRIO will:

- (i) serve as an engagement platform to create collaboration and awareness of barriers to population-based cancer screening amongst public, private and not-for-profit health system stakeholders, social services agencies and patient representatives;
- (ii) support the implementation and evaluation of novel solutions that will enhance population-based cancer screening in well-defined (data-supported) underserved populations.
- (iii) support the identification of population-based cancer screening gaps in underserved populations by leveraging data and linking disparate sources where feasible (e.g. health services data, social data);

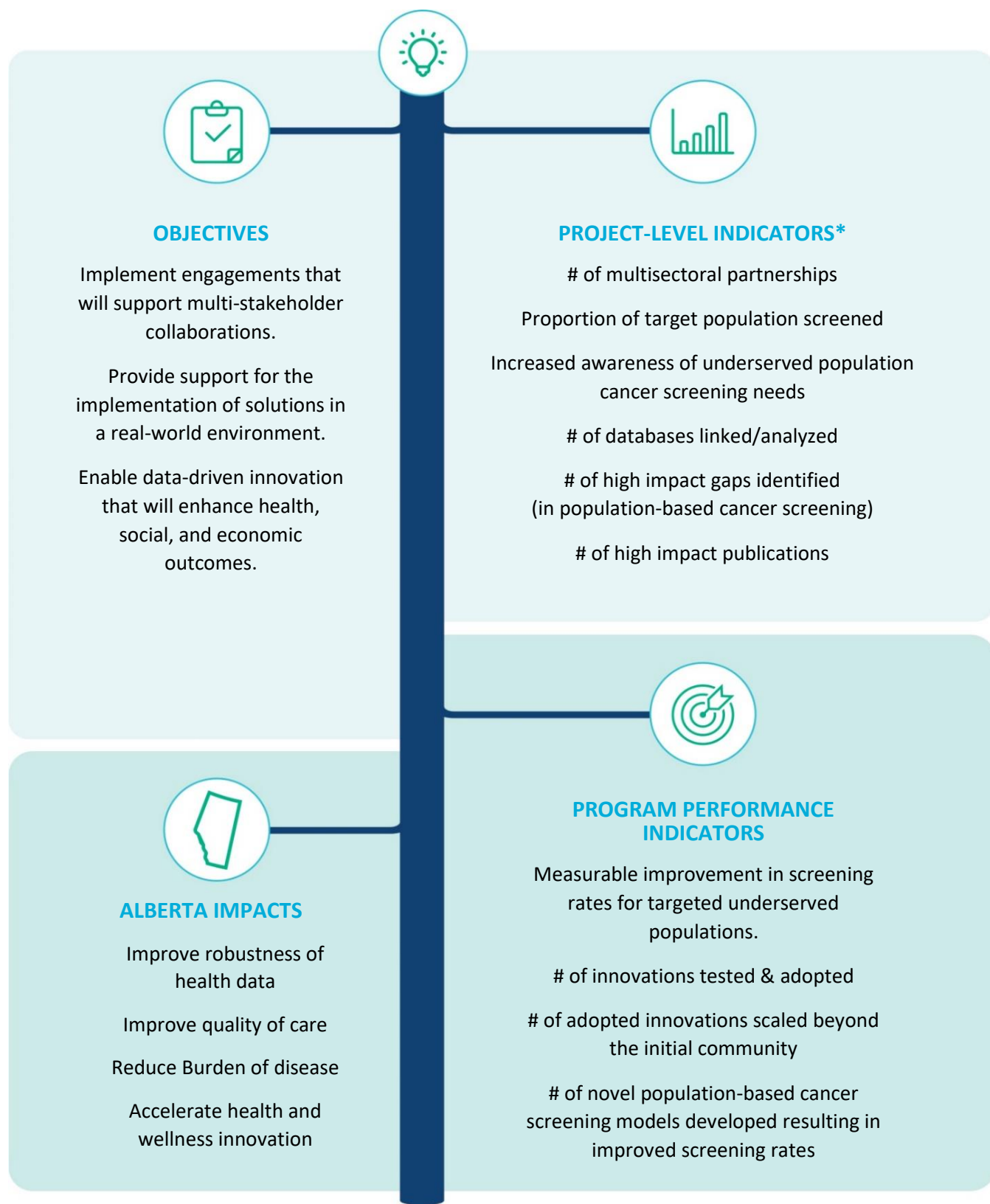
Researchers working in the public or not-for-profit sectors in Alberta may be eligible to receive funding for Projects lasting up to two years to explore solutions to enhance population-based cancer screening. **Projects with a digital or data-enabled solution will be prioritized.**

Objectives and Performance Metrics

Over the life of a Project, Alberta Innovates employs an active project management philosophy, regularly monitoring performance and supporting the Applicant to reach their objectives. Funding is tied to outcomes and achievement of results. For this reason, Alberta Innovates funds on a milestone completion basis. This means the Applicant is expected to submit a Progress Report before Alberta Innovates advances the next tranche of funds.

Once Projects are completed, Alberta Innovates continues to monitor performance for five (5) years to accurately evaluate the economic, social and environmental benefits realized for the province. All Investment Agreements outline performance indicators developed in collaboration with the funder and tracked over the course of the Project. These are highlighted on the next page.

Objectives and Performance Metrics for CSRIO



*Indicators will vary by project and stream. Project teams will identify applicable indicators in collaboration with the funder.

HOW THE PROGRAM WORKS

The CSRIO is a three-year, \$3 million-dollar Program composed of three independent streams. Eligible Applicants may apply to one or all three Streams.



STREAM I Community Engagement

DEADLINE: Continuous Intake until August 2021

TERM: up to 6 months

For Applicants who are seeking to implement a valuable cross-organizational or sectoral engagement that will lead to the realization of CSRIO program objectives.

Accepting applications on a continuous intake until August 2021 for project budgets up to \$10,000.00 and terms up to 6 months.



STREAM II Solution Implementation

DEADLINE: August 30, 2019

TERM: 24 months

For Applicants who are seeking to test the implementation of a solution to a well-defined gap in cancer screening in underserved populations.

Accepting applications until **August 30th, 2019** for project budgets up to \$750,000.00 and terms up to 24 months.



STREAM III Data Integration & Analysis to Define New Gaps

DEADLINE: TBA

TERM: TBA

For Applicants who are seeking to optimize cancer screening by leveraging data and linking disparate data sources, where feasible, to identify, verify, define and/or better understand cancer screening gaps.

Application process will be announced SOON, pending feasibility!

I- Community Engagement

Continuous Intake until August 2021

Up to 6 month project terms completed by January 2022



Up to \$ 10 K per project

II- Solution Implementation

Application deadline August 30, 2019

24 month Project Term January 2020- January 2022



Up to \$ 750 K per project

III- Data Integration & Analysis to Define New Gaps

To be announced SOON!

M J J A S O N D | J F M A M J J A S O N D | J F M A M J J A S O N D
A U U U E C O D | A E A P A U U U E C O D | A E A P A U U U E C O D
Y N L G P T V C | N B R R Y N L G P T V C | N B R R Y N L G P T V C
2019 2020 2021

How to Apply

Applications are received through our online portal.

ELIGIBILITY

(a) Applicant Eligibility Criteria - To qualify as an applicant an entity must be:

- an Alberta-based Post-Secondary Institution;

OR

- a community-based not-for-profit organization, public health entity or health delivery agent that is:
 - incorporated in Alberta, or
 - incorporated in another jurisdiction and extra-provincially registered in Alberta, or
 - a General Partnership, Limited Partnership or Limited Liability Partnership and registered in Alberta; and
 - Have a physical presence in Alberta;

AND

- be in good financial standing with Alberta Innovates and its subsidiaries InnoTech Alberta and C-Fer Technologies.

(b) Applicant Representative Eligibility Criteria - To qualify, an applicant representative must be:

- a researcher holding an academic appointment at an Alberta-based Post-Secondary Institution **OR** an Executive/Clinical leader of a community-based not-for-profit organization, public health entity or health delivery agent;
- be in good financial standing with Alberta Innovates and its subsidiaries InnoTech Alberta and C-Fer Technologies;
- be prepared to provide a minimum 25% cash or in-kind contribution of the total eligible Project Costs.

(c) Project Eligibility Criteria-

To qualify for funding all Projects must:

- Address at least one of the following determinants of health:
 - Individual behavior
 - Social environment
 - Physical environment
 - Health services
- identify critical project “go/no go” milestones;
- have access to the data required to deliver on project milestones in a reasonable timeframe;
- be applicable to more than one zone, sector or hospital;
- plan to be completed within the term.

How Funding Works

(a) Project Funding

Alberta Innovates’ Investment to a successful Applicant will be determined on case by case basis and is provided to cover Eligible Expenses only. The Applicant must provide a minimum 25% cash or in-kind contribution (the “**Contribution**”) of the total eligible Project Costs.

(b) Eligible and ineligible expenses

Alberta Innovates only funds reasonable costs incurred after a signed Investment Agreement being executed between the Alberta Innovates and the Applicant. Any costs incurred prior to the signing of an Investment Agreement, or costs greater than market rates are deemed ineligible. Costs must be incurred between arm’s length entities. Please refer to our standard form Investment Agreement found on our website to get an in-depth understanding of eligible and ineligible costs. Common costs for more than one Project should be allocated on an estimated usages basis by the various Projects.

The chart on the next page provides a high-level summary of eligible and ineligible expenses. If an Applicant is uncertain if a proposed expenditure is eligible or ineligible, they should contact Alberta Innovates prior to making the expenditure.

Summary of Eligible and Ineligible Expenses

Category	Eligible Expenses	Ineligible Expenses
Labour	<ul style="list-style-type: none"> ✓ Labour costs for staff, students or contractors directly and involved in the activities of the Project 	<ul style="list-style-type: none"> ✗ Overhead & administrative costs ✗ Discretionary severance and separation packages ✗ Salaries for academic faculty members, physicians, executives and senior management
Materials	<ul style="list-style-type: none"> ✓ Reasonable costs of materials which can be specifically identified for use in the Project 	<ul style="list-style-type: none"> ✗ Insurance costs for equipment ✗ Construction, renovation of laboratories or offices
Capital Assets & Software	<ul style="list-style-type: none"> ✓ Software critical to the Project will be considered ✓ Computers directly related to the activities of the Project ✓ Other capital assets critical to the Project will be considered on a case by case basis 	<ul style="list-style-type: none"> ✗ Acquisitions of land or buildings ✗ The undepreciated value of eligible capital costs which extends beyond the Project term ✗ Capital Improvements ✗ Telephone and mobile equipment and service contracts
Travel and Relocation	<ul style="list-style-type: none"> ✓ Mileage, lowest economy class airfare, and accommodation. Travel and subsistence costs include reasonable out-of-pocket expenses in accordance with standard Government of Alberta rates (link) for fieldwork, research and other related activities directly related to the project 	<ul style="list-style-type: none"> ✗ Passport or immigration fees ✗ Reimbursement for airfare purchased with personal frequent flyer programs ✗ Commuting costs between place of residence and place of employment
Other	<ul style="list-style-type: none"> ✓ Costs which Alberta Innovates pre-approves in writing as an eligible expense 	<ul style="list-style-type: none"> ✗ Pharmaceutical drug-related trials ✗ Alcohol, staff awards and recognition, professional training and development, clothing ✗ Insurance Costs, unless directly related to Project field work ✗ Parking fees unless directly related to Project field work ✗ Protection of intellectual property

EVALUATION PROCESS

During the different phases of the program, Alberta Innovates leverages internal staff and external expert reviewers to evaluate the Applications submitted. Alberta Innovates evaluates promising CSRIO projects based on the magnitude of the opportunity, the likely impact, and the potential of the project to deliver on the CSRIO objectives.

Alberta Innovates retains the sole right to determine the evaluation process and does not disclose the names of its external reviewers to ensure their objectivity and impartiality. All external parties are subject to both confidentiality and conflict of interest policies set by Alberta Innovates.

The assessment criteria for CSRIO and all investment decisions are at the sole discretion of Alberta Innovates.

For the continuous intake streams, an Applicant whose Application is declined by Alberta Innovates may request permission to re-apply to Alberta Innovates to address and correct any deficiencies or issues.

TERMS AND CONDITIONS

This Program Guide is intended as a high-level overview of the CSRIO Program. It provides interested applicants with a roadmap of what to expect over the lifecycle of an CSRIO Project, from the announcement of the program, through the Application stage, during the Project and post-completion. Should you have any questions about this guide or what is expected, please contact Alberta Innovates. Please be aware Alberta Innovates may modify this guide from time to time in keeping with any changes to the program.

Alberta Innovates will only correspond in writing and provide copies of the Application to the person named in the application form as the one authorized to speak for the Applicant.

Once applications for funding have been evaluated and approved, Alberta Innovates will require the Applicant to sign a standard form Investment Agreement. A copy of the Investment Agreement is available on the Alberta Innovates website. The Investment Agreement sets out in detail the roles, responsibilities and obligations of the various Parties to ensure a successful Project. Alberta Innovates will not provide any funding until the Investment Agreement has been signed by all Parties.

Alberta Innovates will only fund Applicants who have satisfied all eligibility criteria. Meeting the eligibility criteria does not guarantee access to funding, and all funding decisions will be made by Alberta Innovates at its sole discretion.

Alberta Innovates continues to require information from the Applicant for five years following the completion of the Project to measure long-term benefits.

CONTACT INFORMATION

Should you have any questions about this guide or the CSRIO Program in general, please contact Alberta Innovates at inbox_grants@albertainnovates.ca.

For any programmatic or strategic questions regarding potential Projects, access to data, introductions to stakeholders, or an idea for future opportunities in this space, please contact:

Nicole Mardis

Program Manager

TEL: 780.429.7652

[Email: nicole.mardis@albertainnovates.ca](mailto:nicole.mardis@albertainnovates.ca)