



Health Innovation: HYRS/SRS Information Session

September 28, 2023

Nicole Mardis and Noor Al-Zanoon
Health Innovation-Talent Portfolio

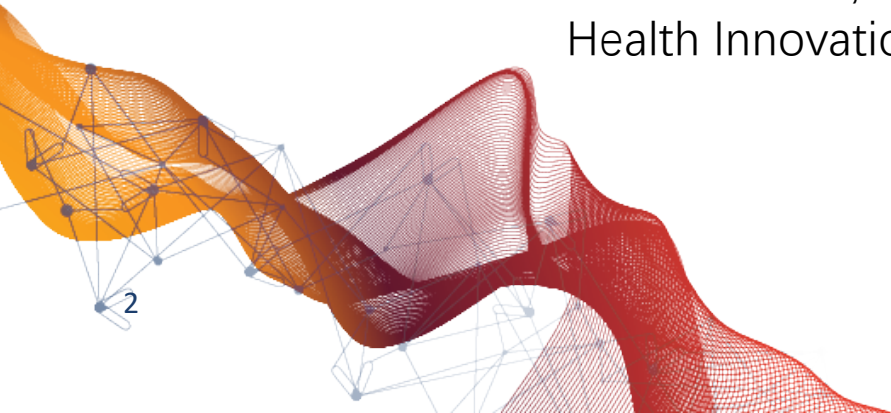
Health Innovation Talent Portfolio



Nicole Mardis, Director
Health Innovation-Talent



Noor Al-Zanoon, Senior Business
Partner- Health Innovation Talent

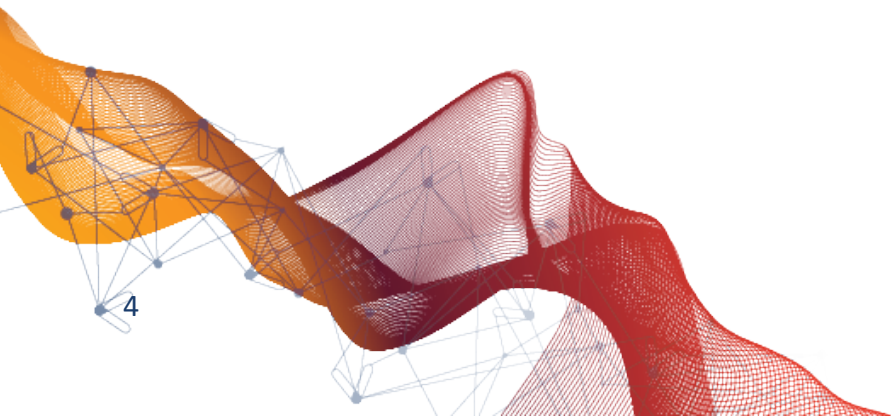


Land Acknowledgment

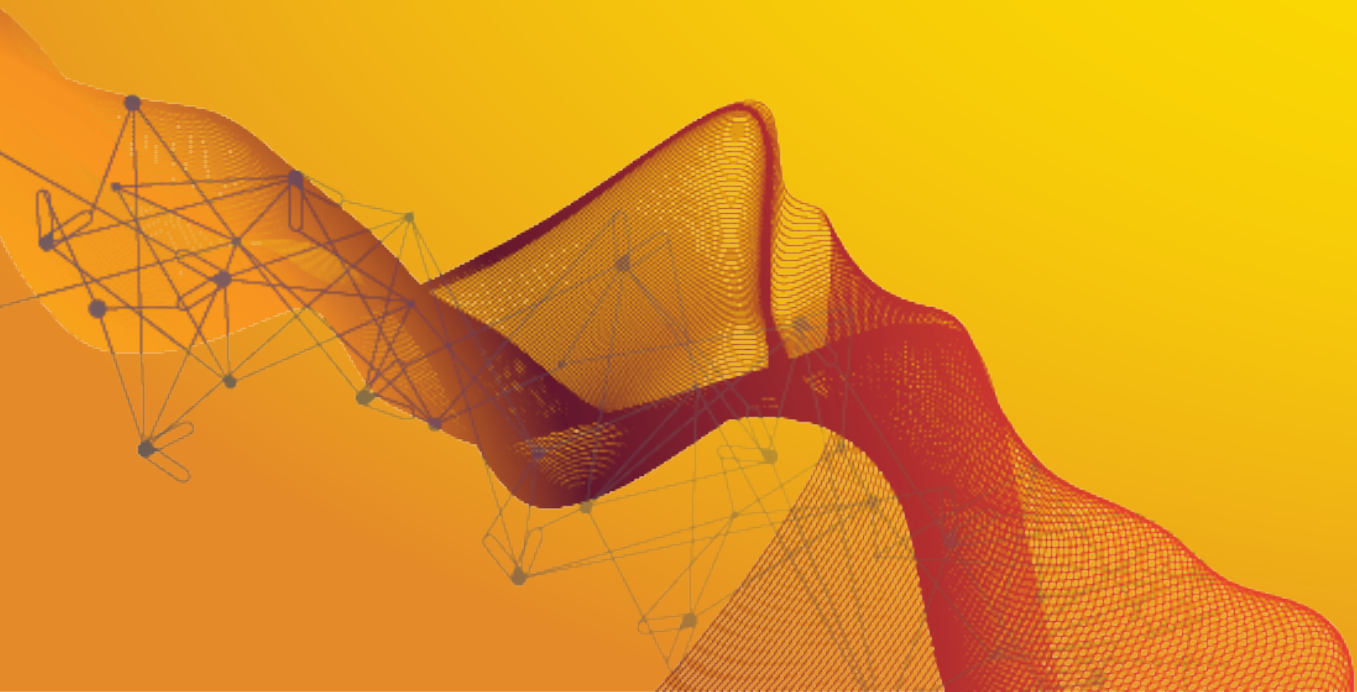
We acknowledge the many First Nations, Métis and Inuit who have lived in and cared for these lands for generations. Alberta Innovates respectfully acknowledges that we are situated on traditional territory of the First Nations; home to Métis Settlements and the Métis Nation of Alberta. We make this acknowledgement as an act of reconciliation and gratitude to those whose territory we reside on or are visiting.

Plan for Today

1. Learn about who Alberta Innovates and the Health Innovation Talent Portfolio
2. Learn about the HYRS/SRS programs (objectives, target trainees and PSI roles)
3. Understand the role of PSIs in administering HYRS/SRS programs
4. Learn how to apply for funding from Alberta Innovates



Introduction to Alberta Innovates



About Alberta Innovates

WE ARE

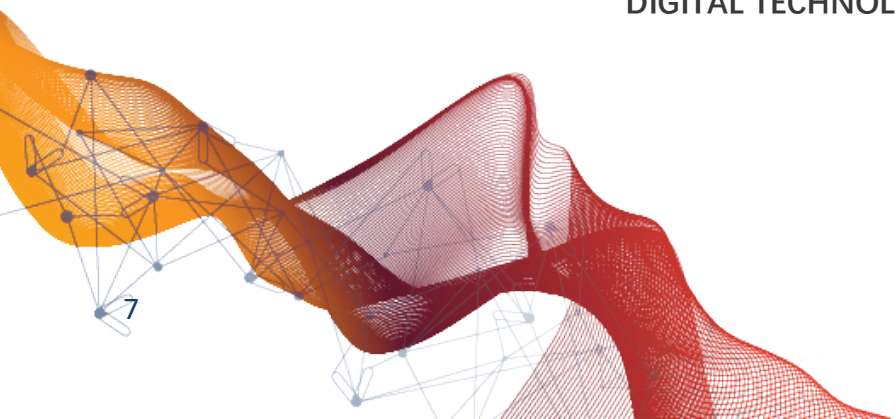
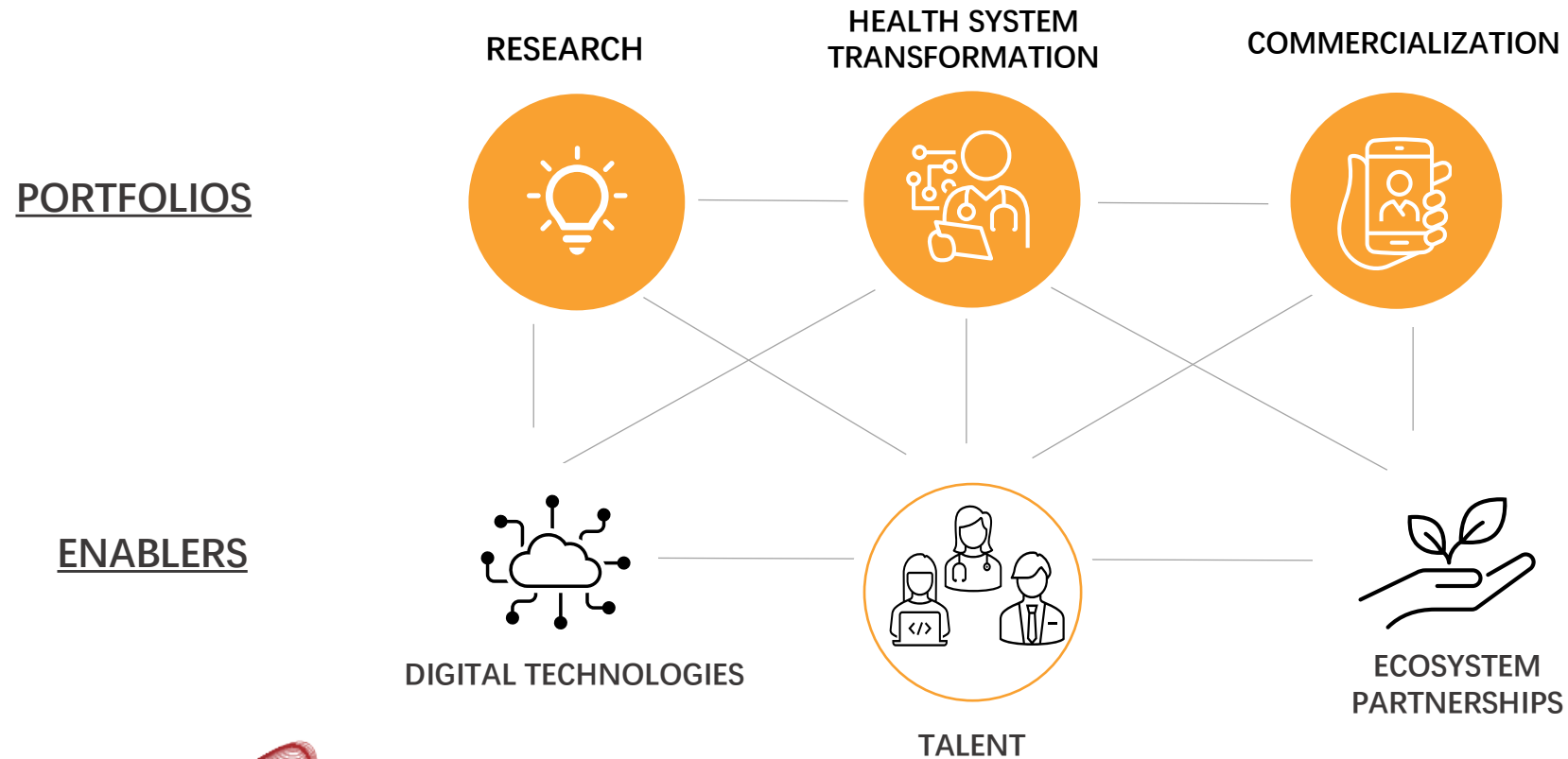
The largest research & innovation agency in the province. We work across sectors to help catalyze and accelerate innovation.

OUR ROLE

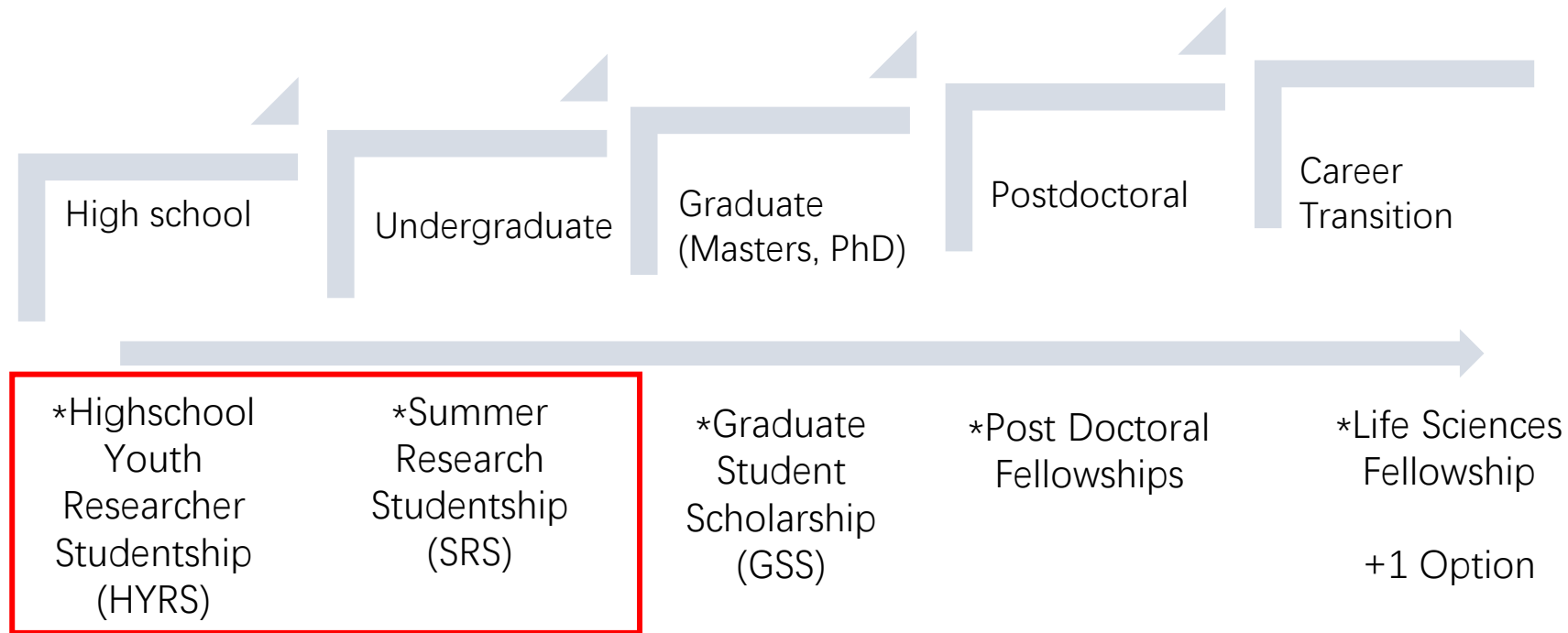
- Funder and service provider
- Partner and collaborator
- Catalyzer and convener



Health Innovation at Alberta Innovates

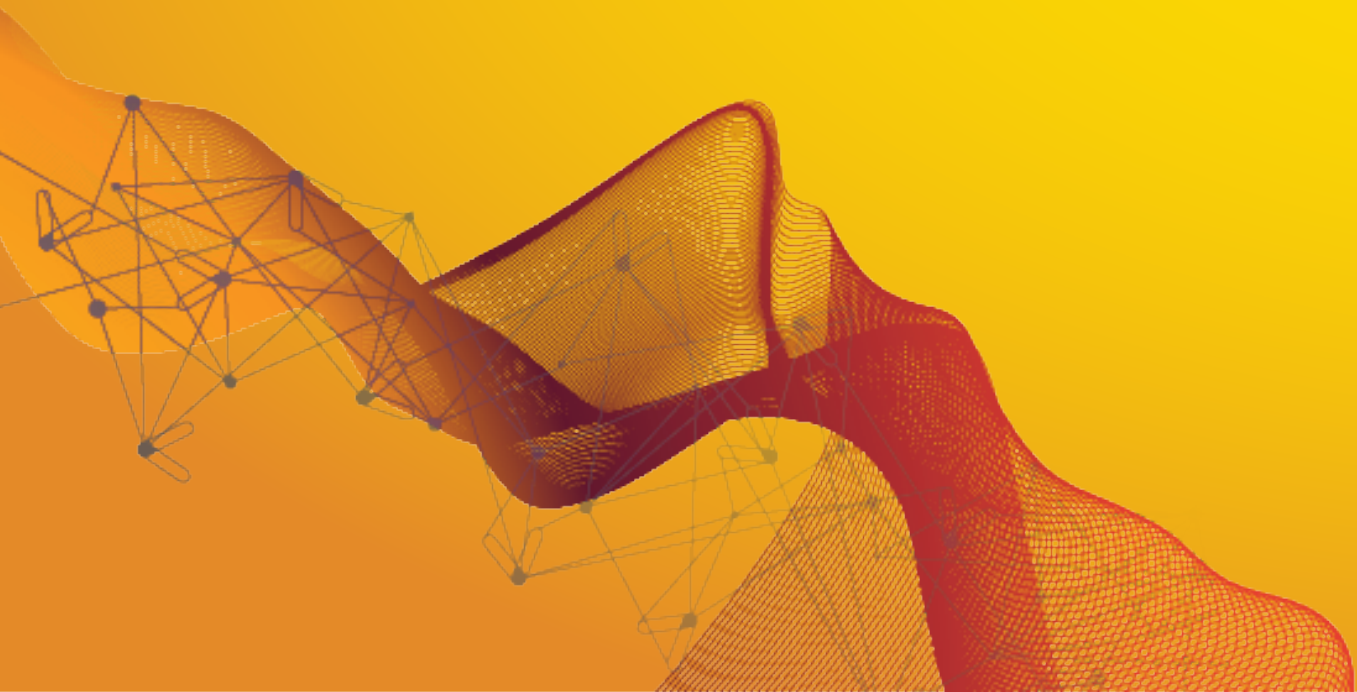


Alberta Innovates: Talent Programming



*These programs have specific priority areas

What are the HYRS/SRS programs?



High School Youth Researcher Summer Program (HYRS)

Description: Provide students with paid experiential opportunities during the summer months with the goals of:

- Increase awareness and interest in research and innovation careers – particularly at the intersection of health and emerging technologies
- Create opportunities for emerging talent to acquire experience and connections in Alberta's health R&I ecosystem.
- Increase the competitiveness of Alberta as a destination for R&I talent
- Leverage partner relationships to advance Digital Health innovation in Alberta.

2. **Target trainees:** **High school students** (grades 11 and 12)

3. **Length:** students may participate in an experiential learning for up to 8 weeks

4. **Additional considerations:** program participants are minors, residence arrangements, program often requires more career development programming.

Summer Research Studentship(SRS)

- 1. Description:** Provide students with paid experiential opportunities during the summer months with the goals of:
 - Increase awareness and interest in research and innovation careers – particularly at the intersection of health and emerging technologies
 - Create opportunities for emerging talent to acquire experience and connections in Alberta’s health R&I ecosystem.
 - Increase the competitiveness of Alberta as a destination for R&I talent
 - Leverage partner relationships to advance Digital Health innovation in Alberta.
- 2. Target trainees:** **undergraduates or college student**
- 3. Length:** students may participate in an experiential learning for between 4 weeks and 4 months

What types of projects can students engage in?

- Students may engage in a range of projects related to developing a needed skill within health innovation
- As part of the contract with Alberta Innovates, PSI's need to support projects that fall under the following **priority areas**:
 - Health System Transformation
 - Digital and Data Driven Health Research
 - Commercialization

***Note: If unsure of project fit, consult with AB Innovates HYRS/SRS Rep.**

HYRS: 50% of projects in AB Innovates Priority Areas

SRS: 40% of projects in AB Innovates Priority Areas

Examples of Projects

- Health Innovation and research activities on a continuum
- Projects can range from basic science activities to testing clinical tools or health systems research



Basic Science in a lab



Health Systems research



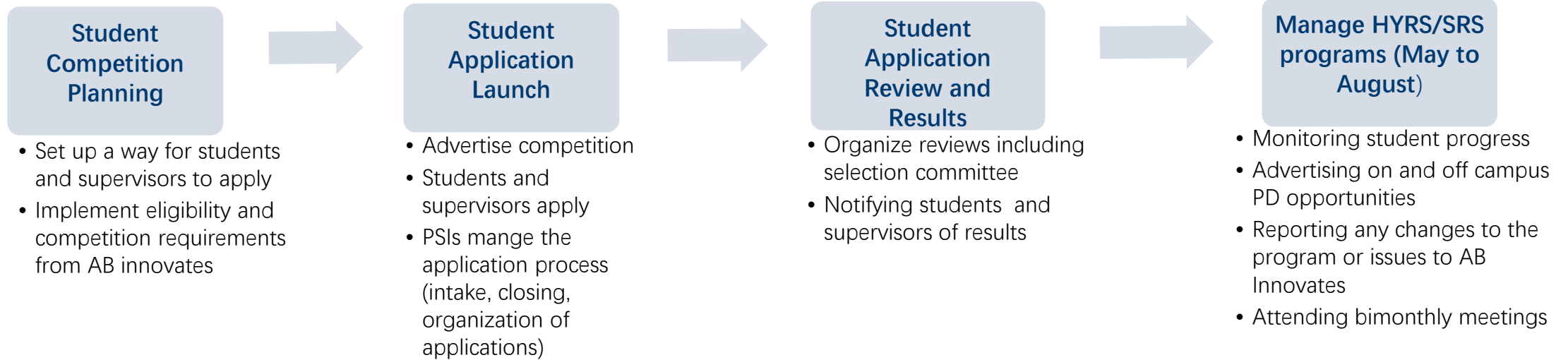
Testing a technology, or clinical tool efficiency of a simulation *



Investigating the effect of technology or new ways of doing in health care.

What is your role in HYRS/SRS?

As one of our funded PSI's, you run the HYRS/SRS program from competition to the management of students accepted into program:



***Note: A detailed description of PSI responsibilities can be found in guidelines sheet p.6, section 2.0 Responsibilities**

How do PSIs and AB Health Innovation team fit together?

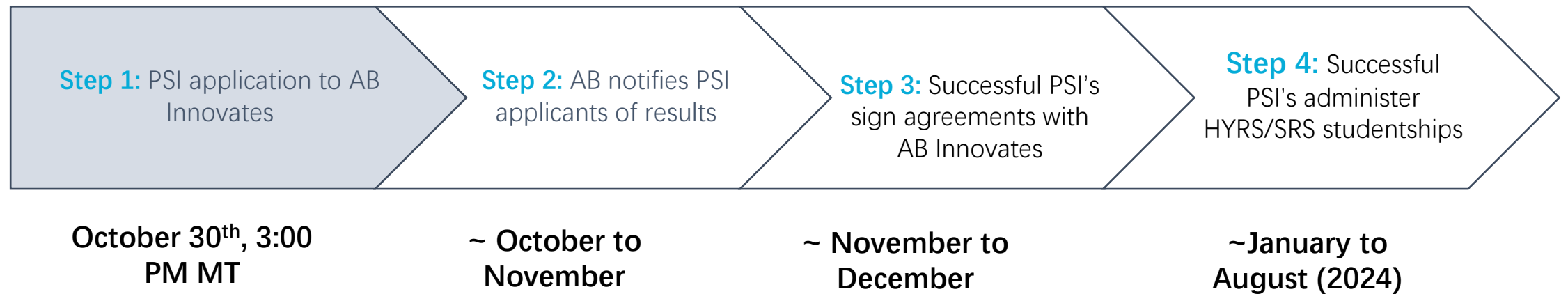
PSIs apply for funding through AB Innovates competition

Successful PSIs plan and launch studentship competition

PSI's distribute funding to students and manage the studentship programs (HYRS/SRS)

What is the application process for PSIs?

PSI Application Process and Program administration Timeline



***Note: Timelines post October 30, are approximate and may change.**

PSI Application Eligibility

To be eligible to hold block grant funding for either the HYRS or SRS program:

- A publicly funded Alberta based institution in one of the following categories:
 - Comprehensive Academic and Research University (CARU)
 - Undergraduate University (UU)
 - Comprehensive Community Colleges (CCCs)
 - Polytechnic Institution (PI)
- Have related programs to health innovation (research or otherwise)

PSI Application Required Documentation

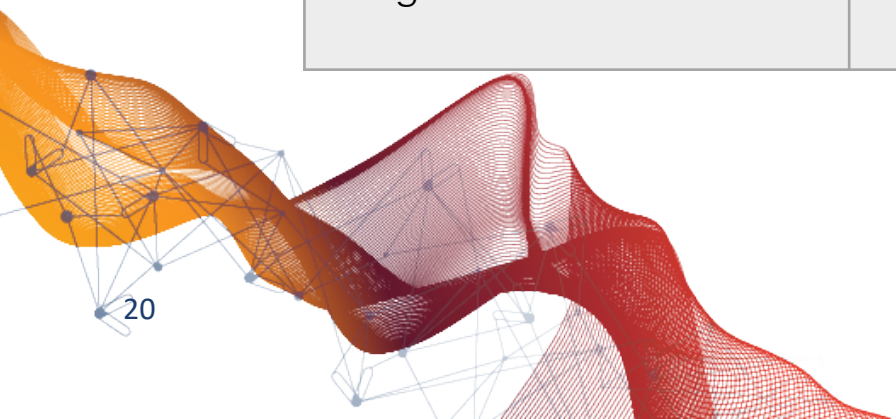
Applicants will use our grants and administration system (Smart Simple)to complete the following:

- Project Title
- Non-Confidential Summary
- Funding letter (1 page)
- Application worksheet (~ 3 pages)

*Note: Use the application review criteria to guide your preparation of your application.

PSI Application Review Criteria

Evaluation Pillar	Description
Relevance to Program Objectives	<ul style="list-style-type: none">• Identification of relevant opportunities related to health research and innovation• Identification of relevant hubs, resources or faculty specializations relevant to health research and innovation
Evidence of diverse career development activities	<ul style="list-style-type: none">• relevant professional development activities beyond research training• Identification of on or off campus career development resources
Evidence in Support for Institutional Capacity	<ul style="list-style-type: none">• Performance history• Competition adjudication details
Team	<ul style="list-style-type: none">• Appropriateness of team to administer the program• Identification of any anticipated changes in the team during the program
Budget	<ul style="list-style-type: none">• Appropriate justification and alignment with Alberta Innovates expenditure guidelines



Resources

1. For application help:

- Info-session slide deck and guidelines package will be sent out
- For application questions and help: Drop-in hours every **Friday 11:00 AM-12:00 PM MT** or PSIs are welcome to e-mail specific questions

2. For successful PSIs running HYRS/SRS programs for the first time:

- Ongoing consults from Alberta Innovates Team
- Collaborate with an experienced PSI to help guide the process and with administration

Next steps

Application Process: Interested applicants are encouraged to contact Noor Al-Zanoon via noor.al-zanoon@albertainnovates.ca, to set up the next steps:

- Invitation to register to Smart Simple
- Invitation to the online application
- Submit application by **Oct 30th at 3:00 PM MT**

Q&A